

PLAYBILL

LAYTON HIGH SCHOOL

MUSICAL THEATRE COMPANY PRESENTS

ZOMBIE



PROM

Zombie Prom Is produced through special arrangement with Concord Theatricals

LAYTON HIGH SCHOOL PRESENTS:

ZOMBIE

PROM

Book and Lyrics by:

John Dempsey

Music by:

Dana P. Rowe

Adapted by:

Mac Timminelli

Based on a story by John Dempsey and Hugh M. Murphy

Direction

Rachel Helwig

Music Direction

Jamie Balaich

Choreography

Niamh Helwig

Make Up

*Curtis Kidd
Abbie Graham*

Technical Director

Brandon Stauffer

Zombie Costume

Abbie Graham

Stage Manager

Taylor Jacobs

Light Board:

Kyndria Eastwood

Sound Board:

Sophie Tobey

Run Crew:

*Joshlyn Christensen
Raine Horrocks
Maddie Murphy
Michael Wood*

Box Office/Concessions

Parents & Family

Ushers

Students & Cast

ZOMBIE PROM IS PRODUCED THROUGH SPECIAL ARRANGEMENT WITH CONCORD THEATRICALS

THE VIDEOTAPING OR MAKING OF ELECTRONIC OR OTHER AUDIO AND/OR VISUAL RECORDINGS OF THIS PRODUCTION AND DISTRIBUTING RECORDINGS OR STREAMS IN ANY MEDIUM, INCLUDING THE INTERNET, IS STRICTLY PROHIBITED, A VIOLATION OF THE AUTHOR(S)'S RIGHTS AND ACTIONABLE UNDER UNITED STATES COPYRIGHT LAW.

CAST LIST

DELILIAH STRICT- LILY HURST

TOFFEE- GABRIELLE GARDNER

CANDY- ABBIE GRAHAM

COCO- EMORY BRADSHAW

GINGER- MOIRA HELWIG

JONNY- WESTON BOWLES

JOSH- BECKHAM WESTENSKOW

JOEY- MICHAEL CHOATE

JAKE- CANNON BENDER

JOSIE- RIHANNA ZEGARRA

EDDIE FLAGRANTE- GIDEON CRAWFORD

DARLA DARLINGTON- RIHANNA ZEGARRA

TOFFEE'S MOTHER- AVERY KOFORD

TOFFEE'S FATHER- KABE ALVORD

DARLA DARLINGTON- RIHANNA ZEGARRA

ANNOUNCER- AVERY KOFORD

MOTORWISE DANCERS-

KABE ALVORD, KARA FAUSETT, EVIE LANGSTON, BECKHAM WESTENSKOW

STAGE MANAGER- MEAGAN VANDERTOOLEN

ENSEMBLE

KABE ALVORD,
CANNON BENDER,
MICHAEL CHOATE,
BECKHAM WESTENSKOW,
RIHANNA ZEGARRA,
AVERY KOFORD,
KARA FAUSETT,
EVIE LANGSTON,
MEAGAN VANDERTOOLEN



ACT 1

PROLOGUE

ENRICO FERMI HIGH
AIN'T NO GOIN' BACK
JONNY DON'T GO

SCENE ONE

GOOD AS IT GETS
THE C WORD
RULES, REGULATIONS, AND RESPECT
AIN'T NO GOIN' BACK (REPRISE)
BLAST FROM THE PAST

SCENE TWO

THAT'S THE BEAT FOR ME

SCENE THREE

THE VOICE IN THE OCEAN
IT'S ALIVE
WHERE DO WE GO FROM HERE?

SCENES & SONGS



INTERMISSION

ACT 2

SCENE ONE

THEN CAME JONNY

SCENE TWO

COME JOIN US
HOW CAN I SAY GOODBYE?

SCENE THREE

EASY TO SAY

SCENE FOUR

AT THE DANCE
EXPOSE'

SCENE FIVE

ISN'T IT?
HOW DO YOU STAND ON DREAMS?
FORBIDDEN LOVE
THE LID'S BEEN BLOWN
ZOMBIE PROM



DIRECTOR'S NOTE

"ZOMBIE PROM," A QUIRKY OFF-BROADWAY MUSICAL FROM THE 90S, IS A GOOFY AND HEARTWARMING SEND-UP OF "GREASE" AND THE ENTIRE CULTURE OF 1950S NOSTALGIA THAT SPAWNED IT. THE SETUP IS FAMILIAR: A "GOOD" GIRL FALLS IN LOVE WITH A "BAD" BOY, AND SOCIAL PRESSURES CONSPIRE TO KEEP THEM APART. THE MUSIC HAS THE SAME EAR-WORM QUALITY, AND THE DIALOGUE HAS A SIMILAR SOUND TO WHAT YOU MAY KNOW FROM "GREASE," THE CLEAR INSPIRATION. HOWEVER, THIS STORY IMMEDIATELY SHOWS A BITING TONGUE-IN-CHEEK INTELLIGENCE BY HAVING OUR LOVERS MEET DURING AN AIR RAID DRILL - THE BLITHE ACCEPTANCE OF THE RIDICULOUS ERA'S FRIGHTENING UNDERTONES IS MADE TO LOOK ABSURD. WHEN JONNY WARNER (OUR BAD-BOY HERO WHO HAS JETTISONED HIS NAME'S "CUSTOMARY H") IS ZOMBIFIED BY THE UBIQUITOUS RADIATION OF THE ATOMIC AGE, THAT TONE IS SET. THE RESULT IS A STORY ENJOYABLE ON ALL LEVELS - AS A ROMANTIC COMEDY ABOUT A SMART, SCIENCE-MINDED GIRL AND HER BOYFRIEND WHO HAPPENS TO BE DEAD, OR AS A SCATHING CRITIQUE OF THE DOMINANT 1950S SOCIETY. WHETHER YOU'RE ON BOARD FOR THE SOCIAL CRITICISM OR NOT, THE MORAL OF THIS STORY IS BEAUTIFUL - LOVE SHOULD NEVER BOW TO STIGMA, AND YOU SHOULD NEVER GIVE UP ON YOUR DREAMS.

**THIS HAS BEEN SUCH A FUN SHOW TO WORK ON- LIGHTHEARTED AND SILLY, BUT WITH A GREAT MESSAGE TOO. ZOMBIE PROM IS THE 42ND PRODUCTION TO PERFORM IN THIS SPACE SINCE 2010 AND WILL BE THE LAST. WE HOPE YOU ENJOY THIS SEND UP OF THE NUCLEAR ERA AND THE SENDOFF TO THE LITTLE THEATER, WHICH WILL BE TORN DOWN IN A MATTER OF DAYS TO MAKE WAY FOR THE SCHOOL EXPANSION AND WILL BE REBUILT IN A NEW SPACE! ONWARD AND UPWARD!
THANKS FOR THE MEMORIES.**

Rachel Helwig

SPECIAL THANKS

- ON PITCH PERFORMING ARTS

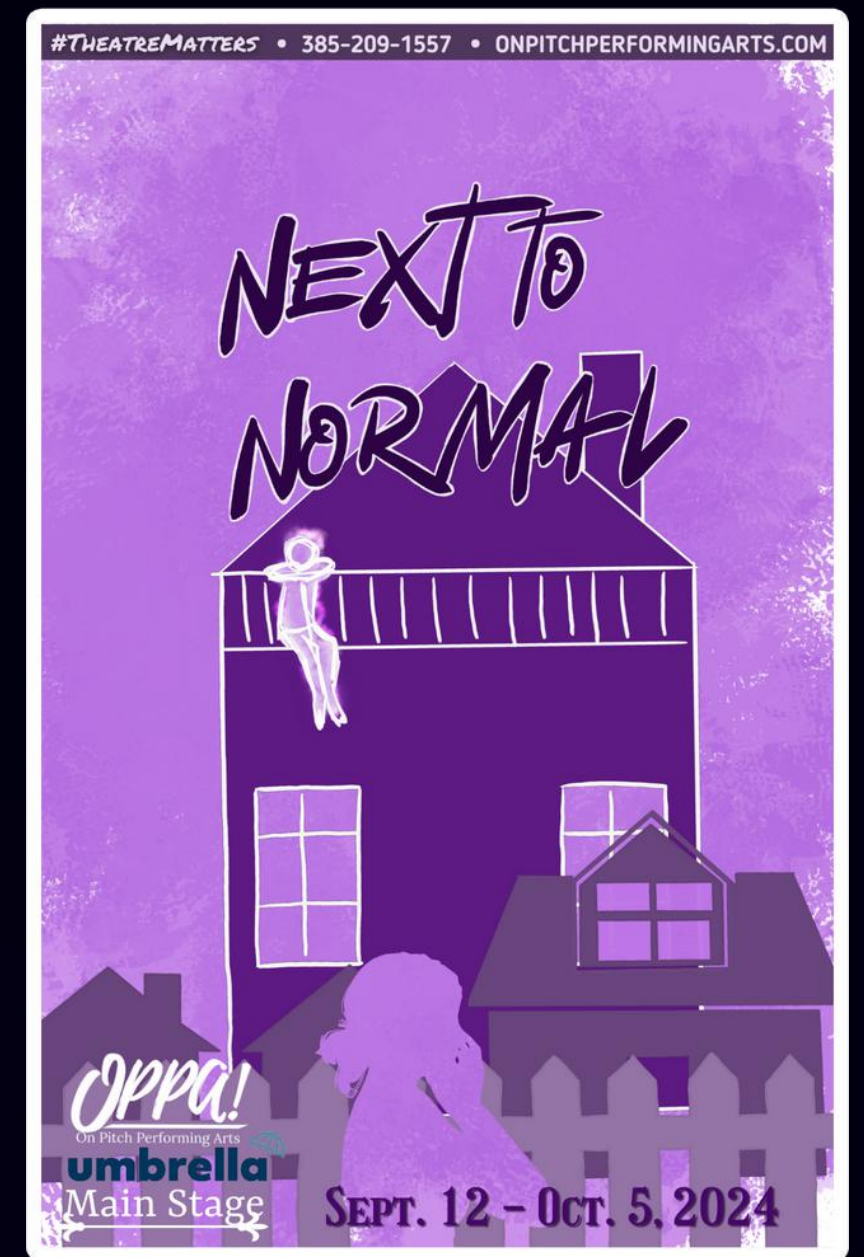
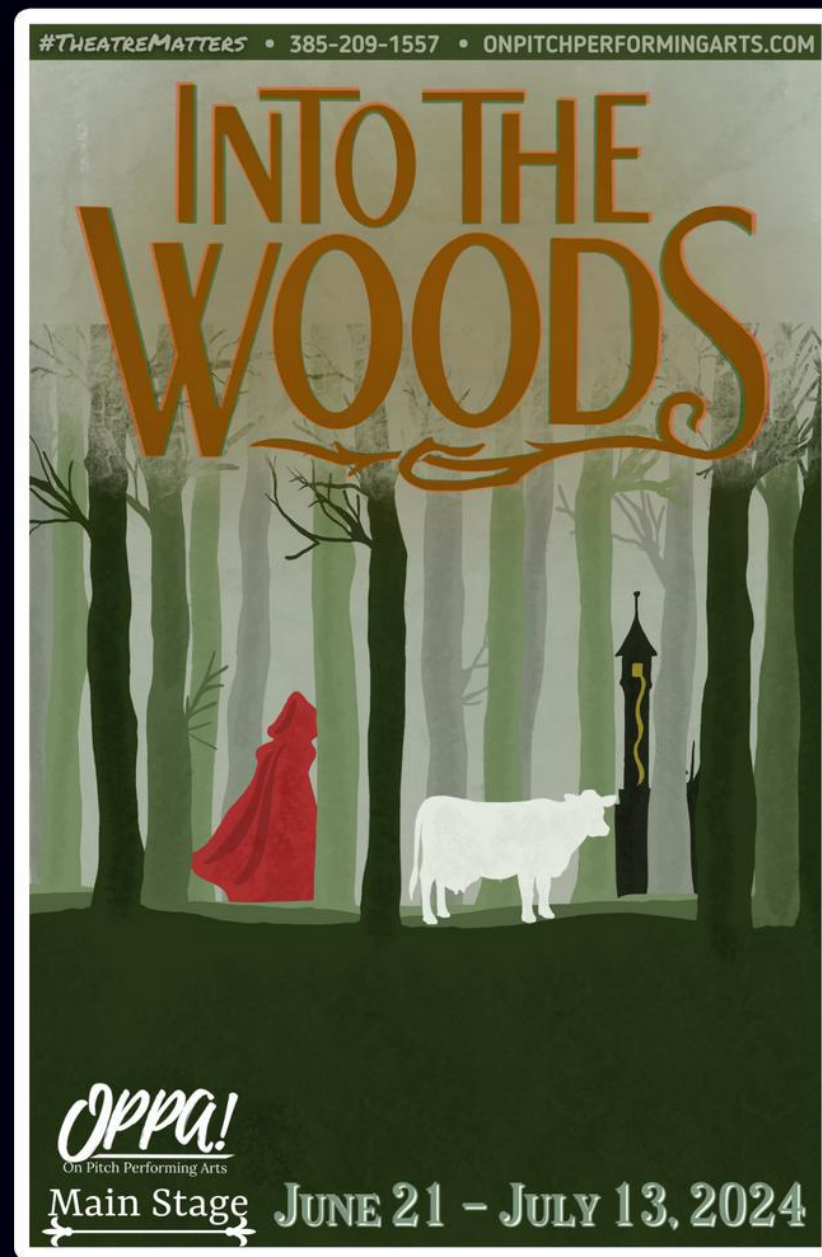
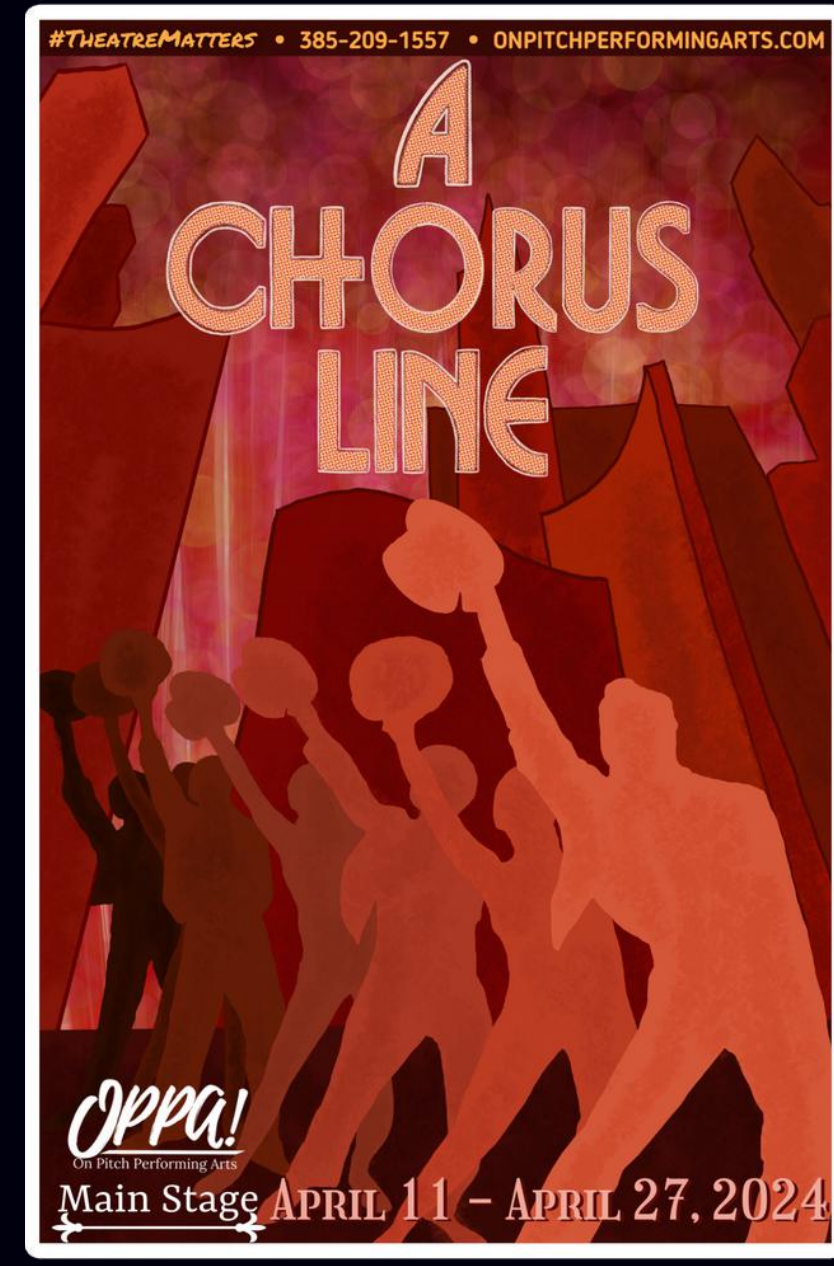
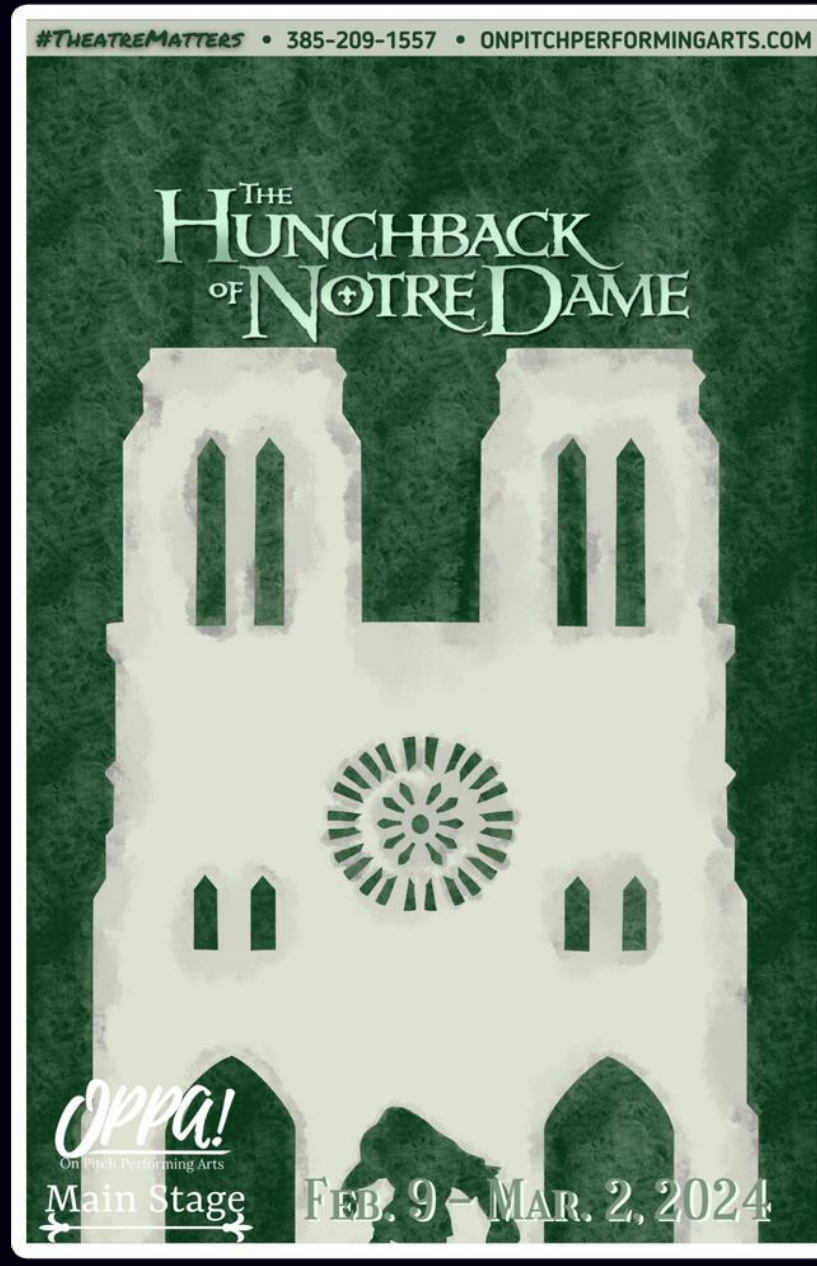
- BROCK JACKMAN

- ROD SOUTHAM AND STAFF

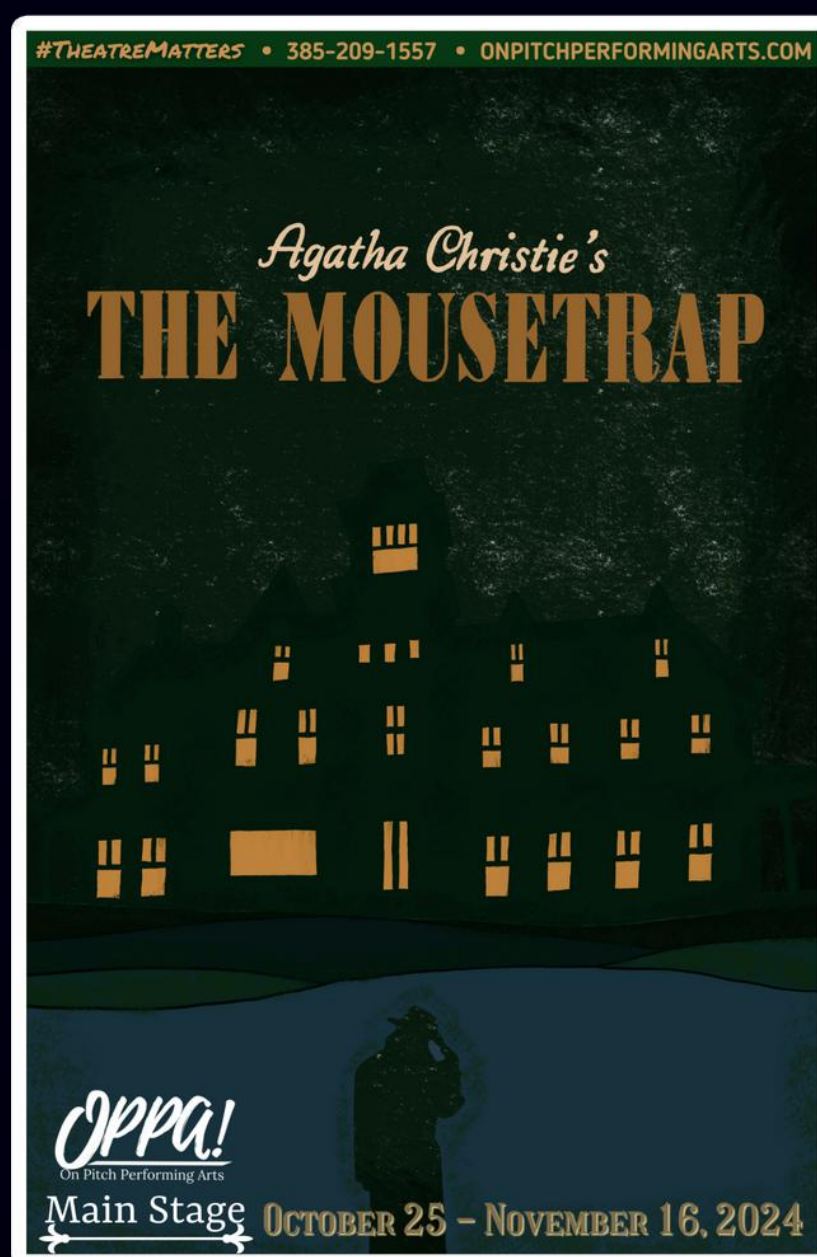




Main Stage Season



2024



Creators Stage Season

